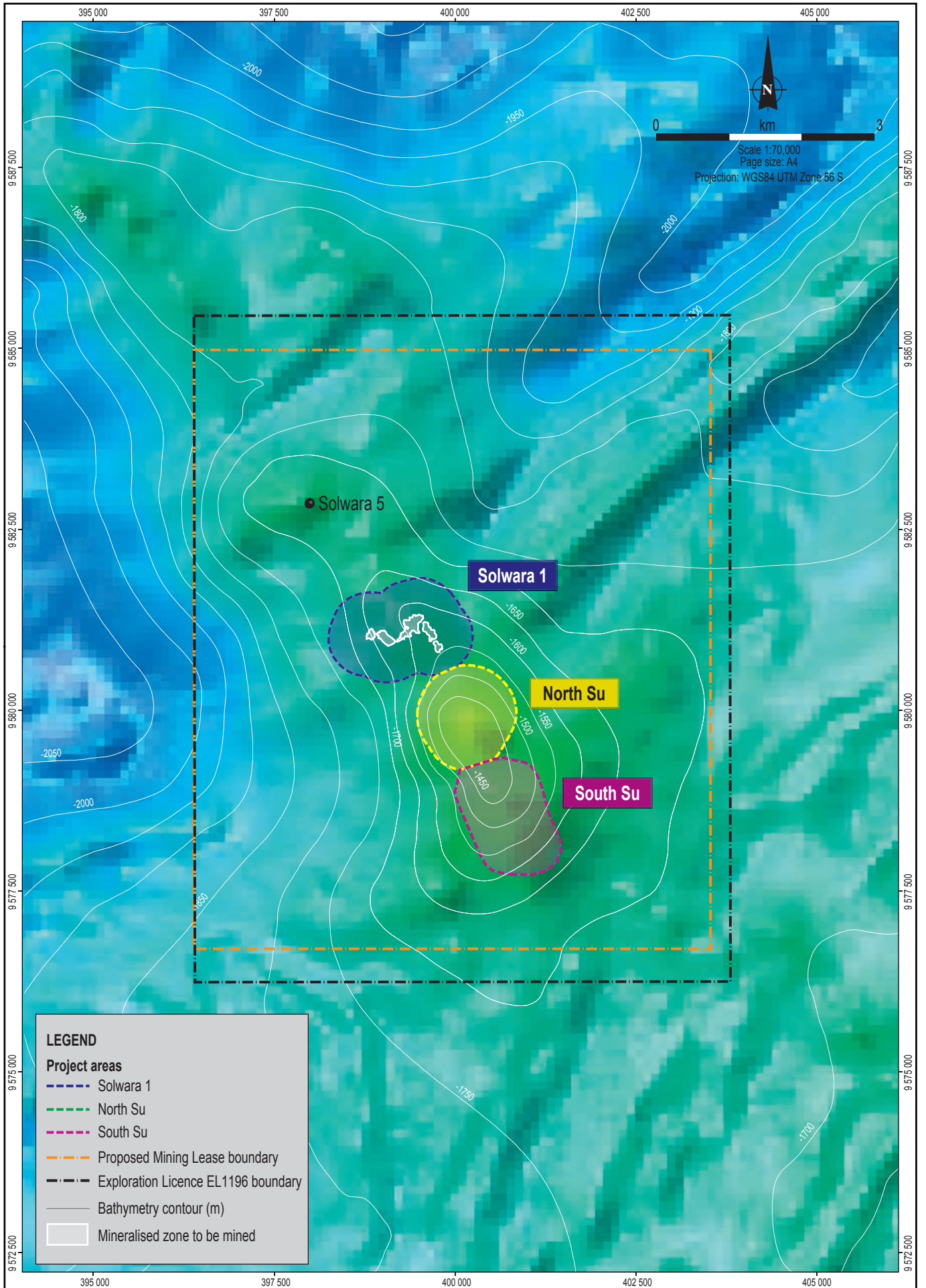


Chapter 5

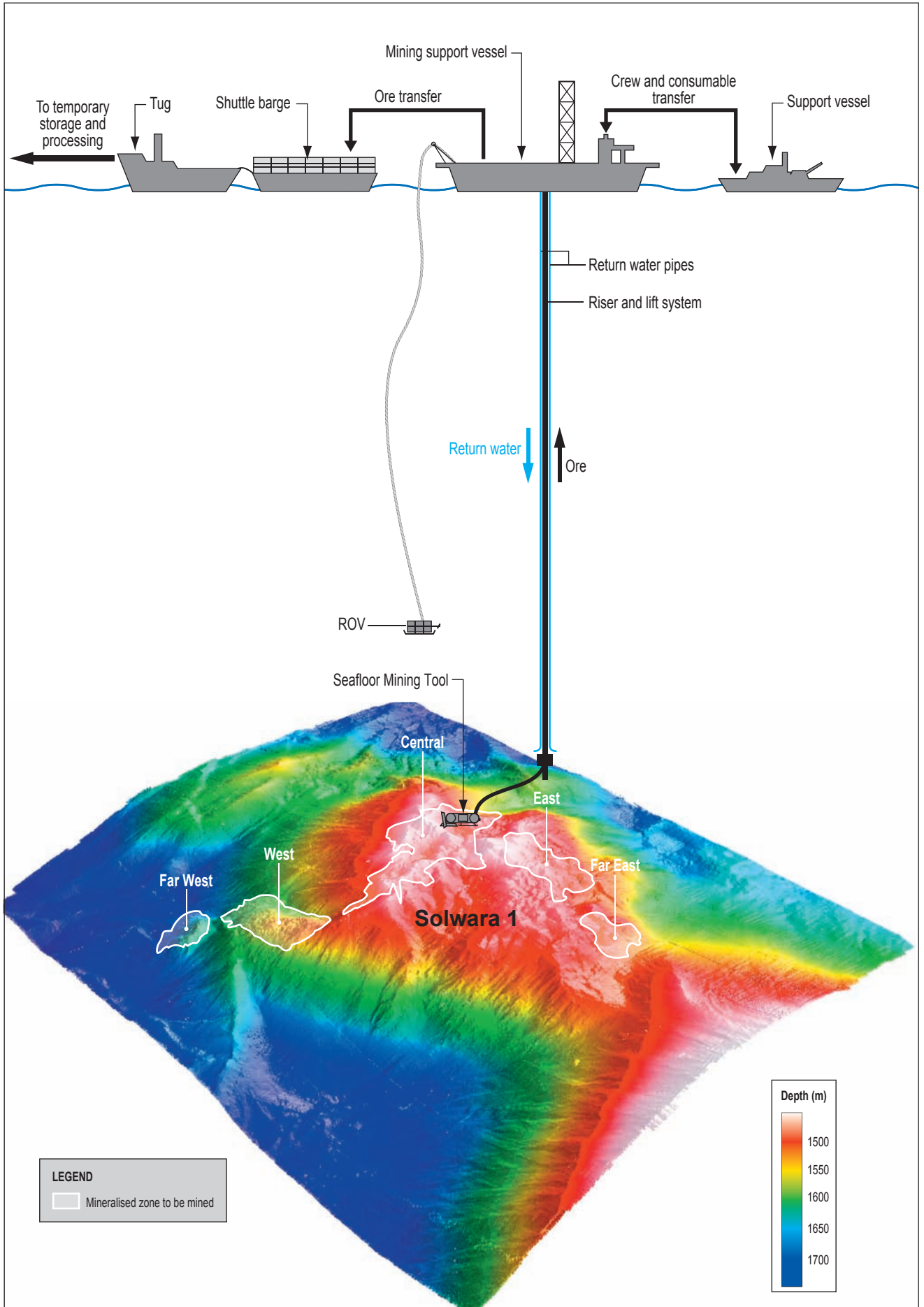
Figures and Plates

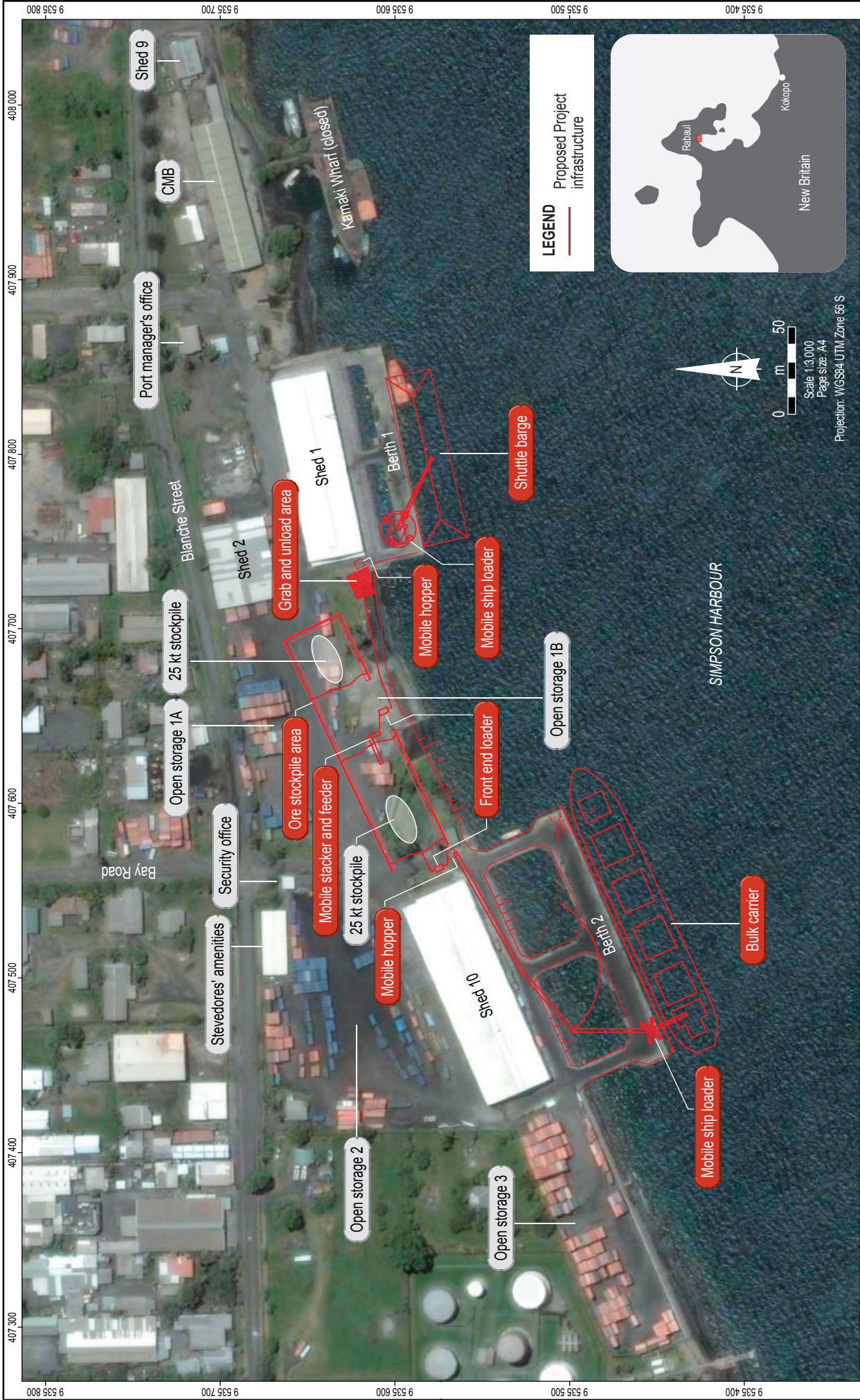


LEGEND

Project areas

- - - Solwara 1
- - - North Su
- - - South Su
- - - Proposed Mining Lease boundary
- - - Exploration Licence EL1196 boundary
- Bathymetry contour (m)
- Mineralised zone to be mined

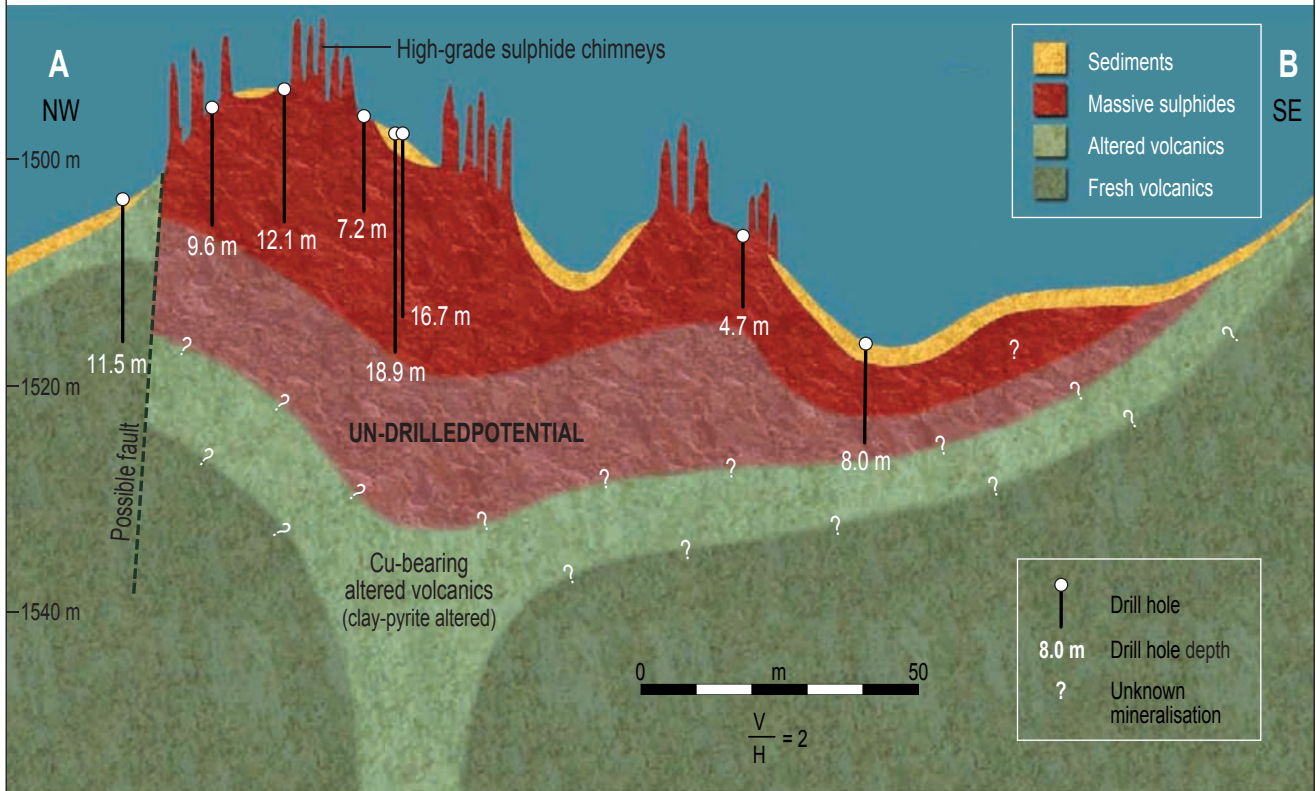




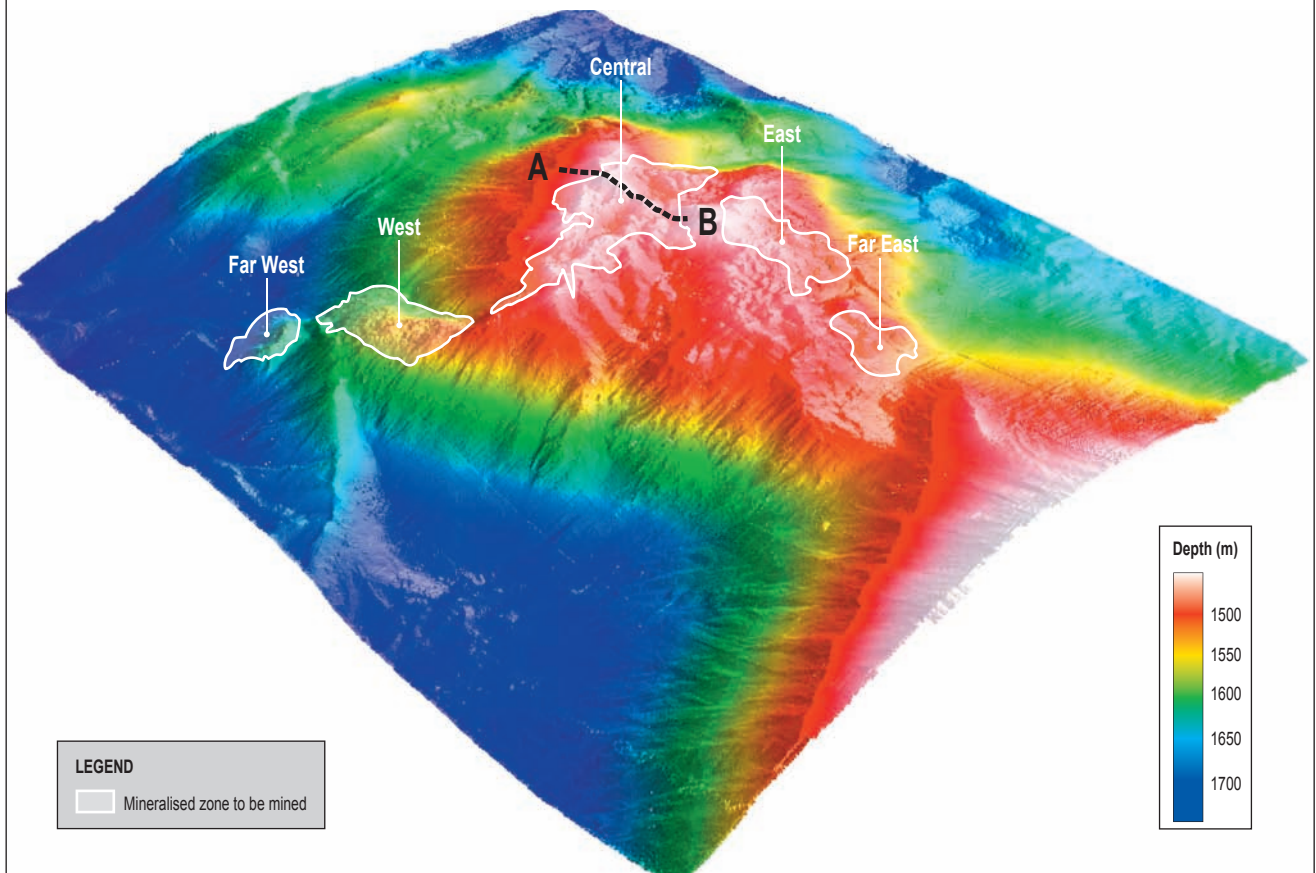
Source: Imagery from Google Earth. Note: Proposed Project infrastructure is schematic.		Date: 22.09.2008 WWD: 7008_Nautlius_Solwara I File Name: 7008_09_F5.03_GIS_AI	Nautilus Minerals Niugini Solwara 1 Project
			Figure No: 5.3

Port of Rabaul proposed Project infrastructure

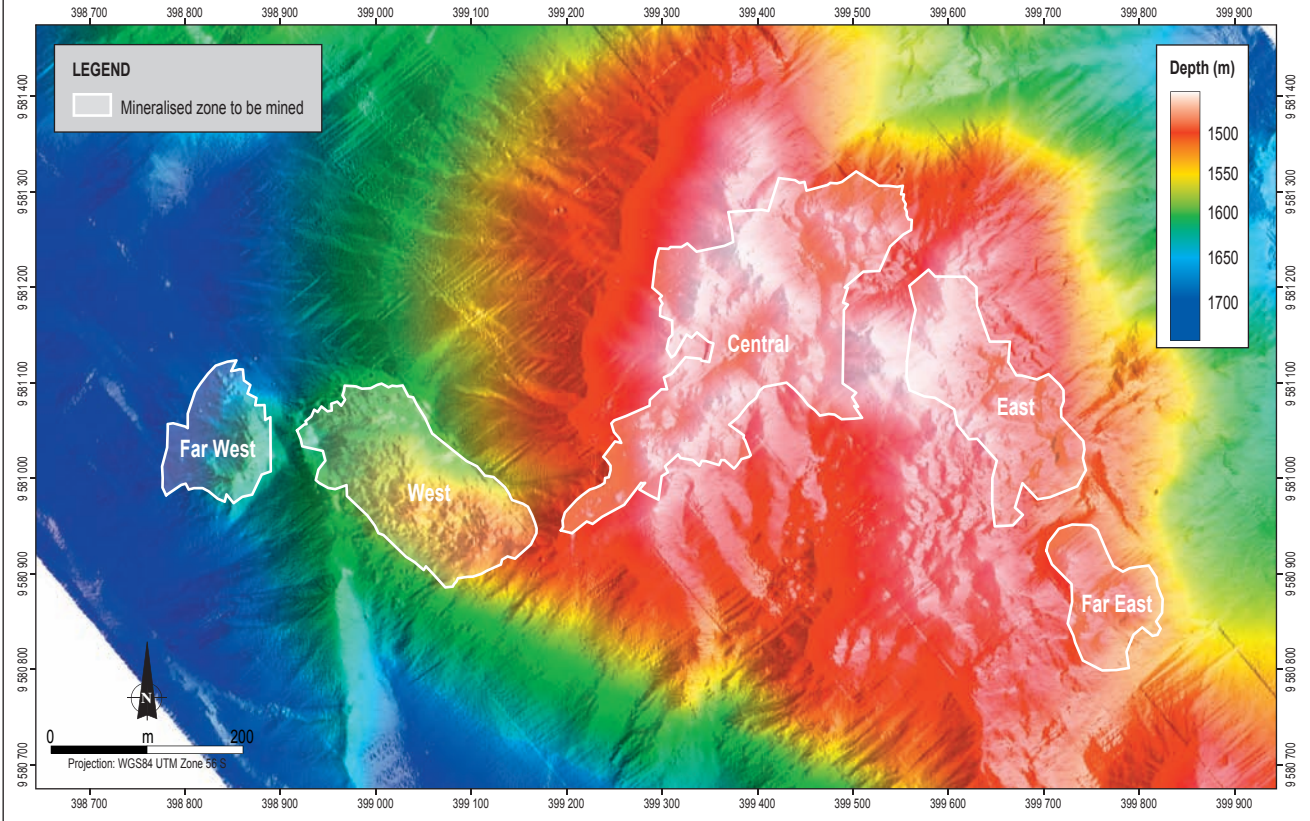
Cross-section through Solwara 1 showing extent of known mineralised zone



3-dimensional image of proposed mining area at Solwara 1, looking north



Plan view of proposed mining area at Solwara 1



3-dimensional image of proposed mining area at Solwara 1, looking north

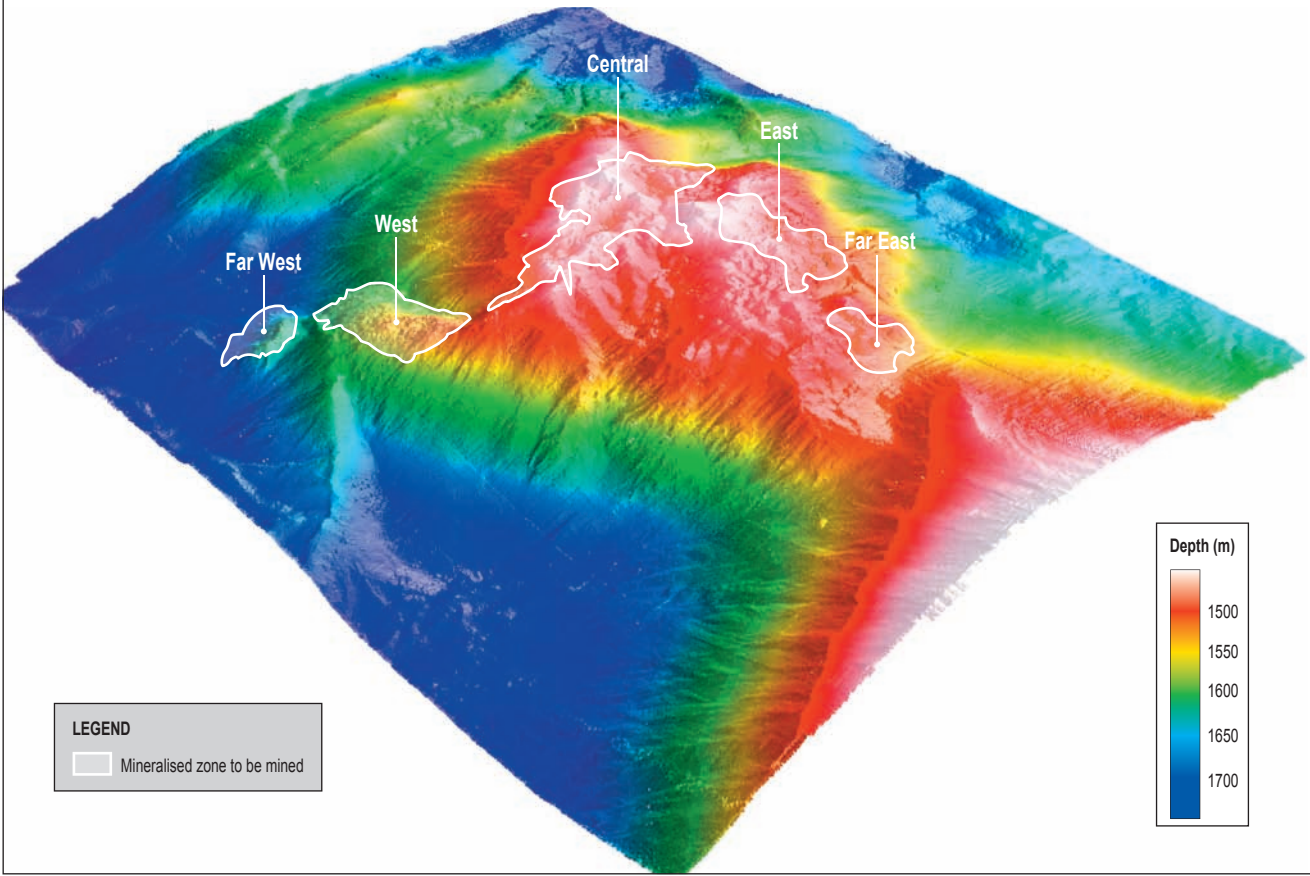




Figure No:

5.6



Nautilus Minerals Niugini

Solwara 1 Project

Job No:

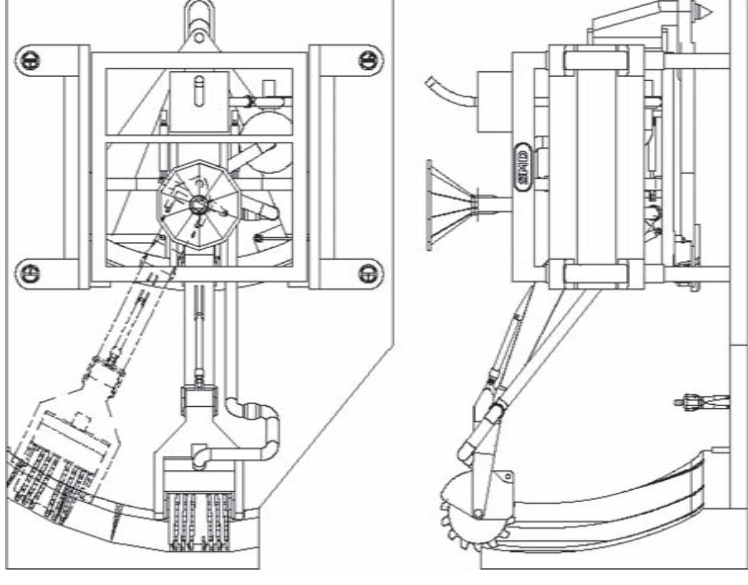
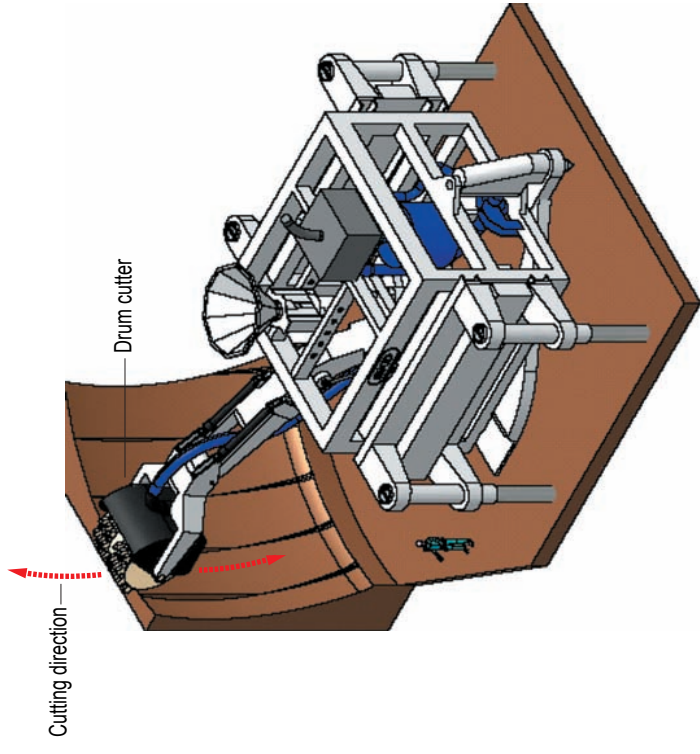
7008

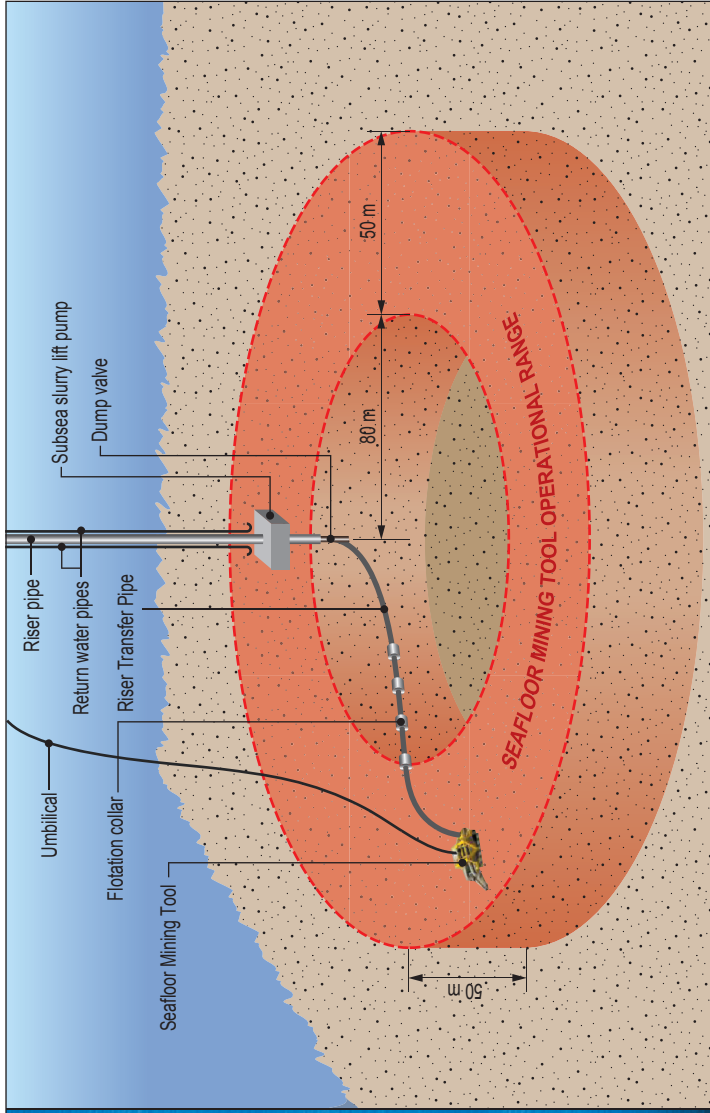
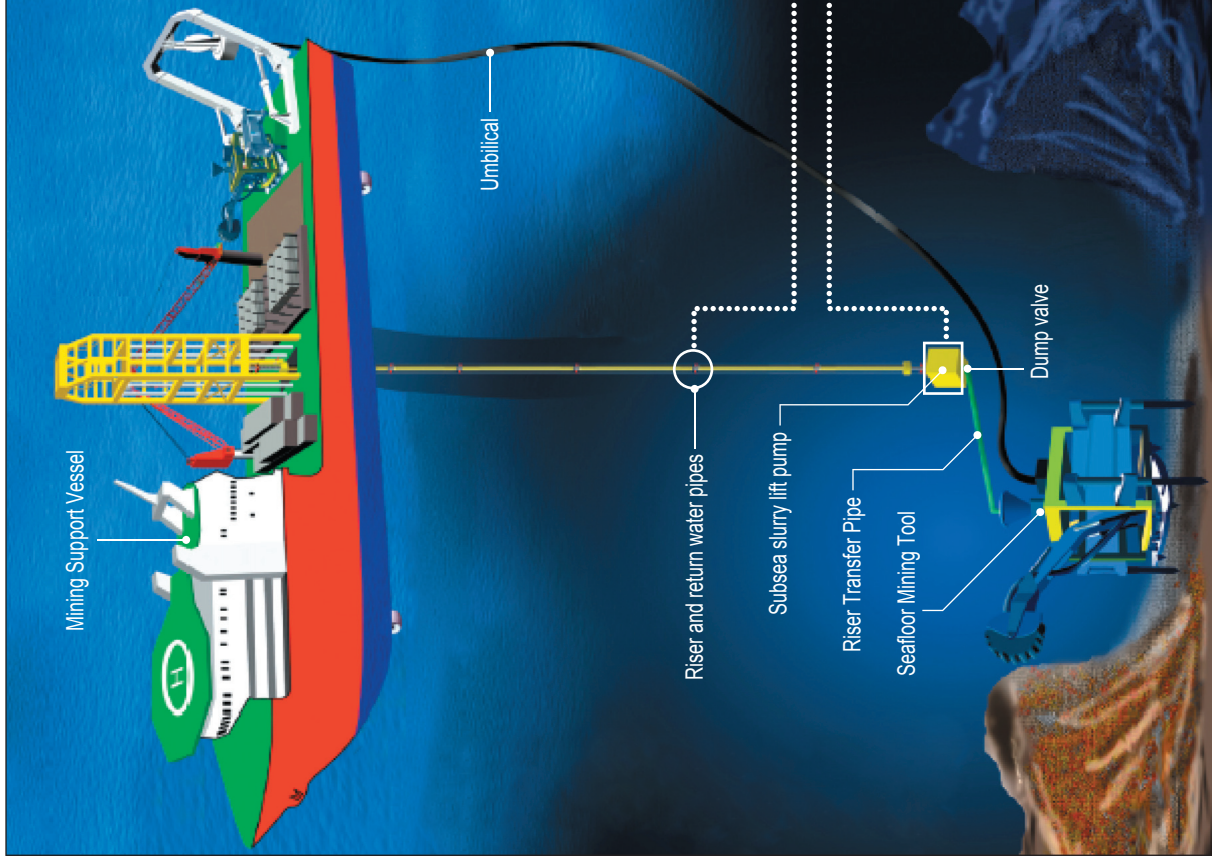
File Name:

7008_09_F05.06_HB



Seafloor Mining Tool with drum cutter





Not to scale

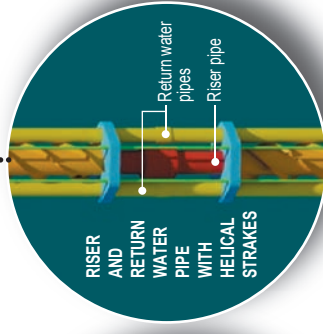
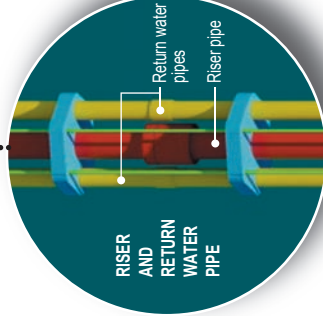
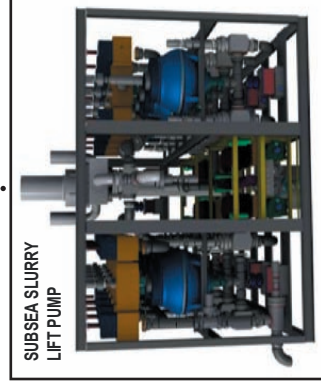




Figure No:

5.9



Mining Support Vessel

Nautilus Minerals Niugini

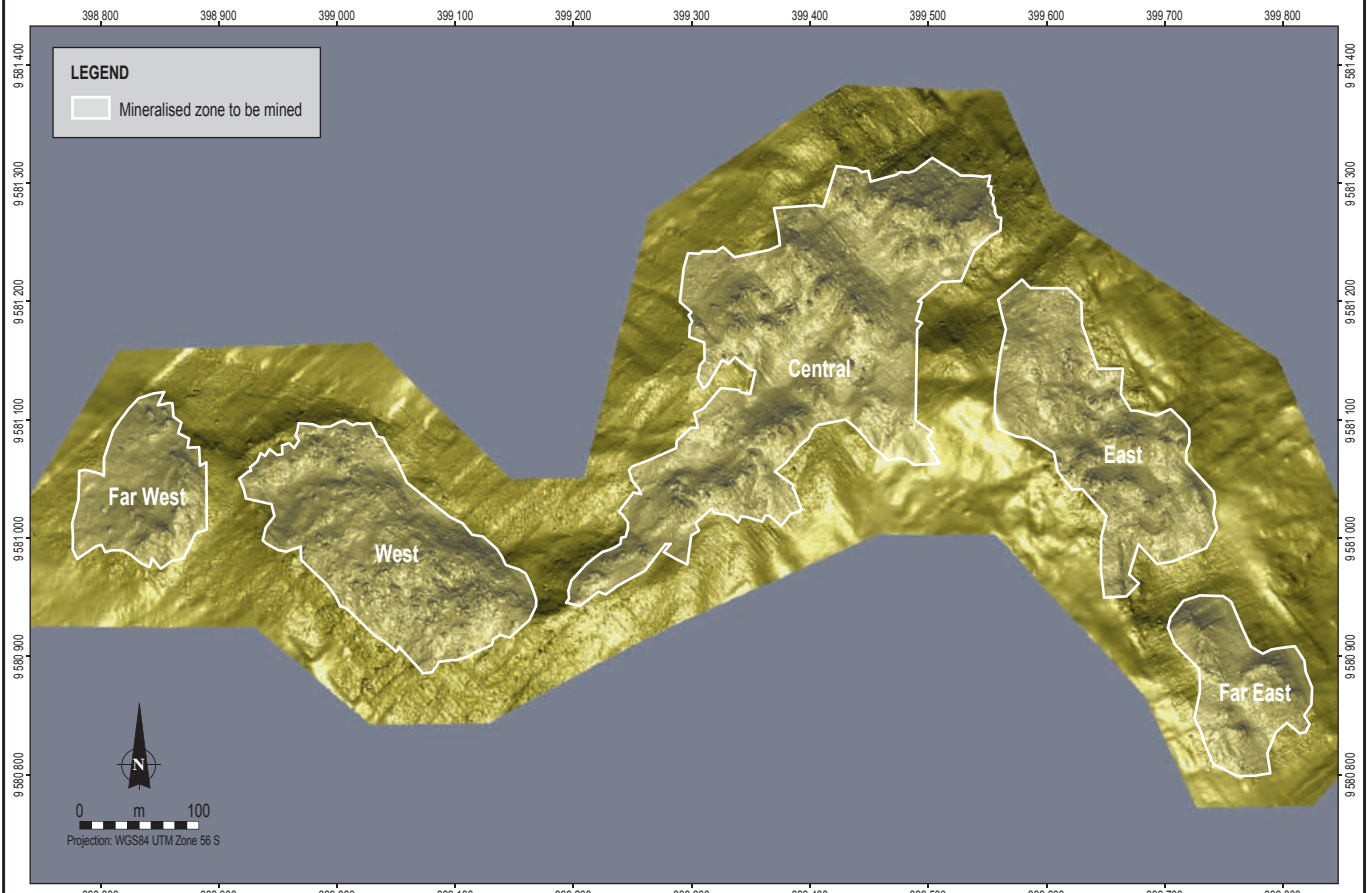
Solwara 1 Project

Job No:
7008

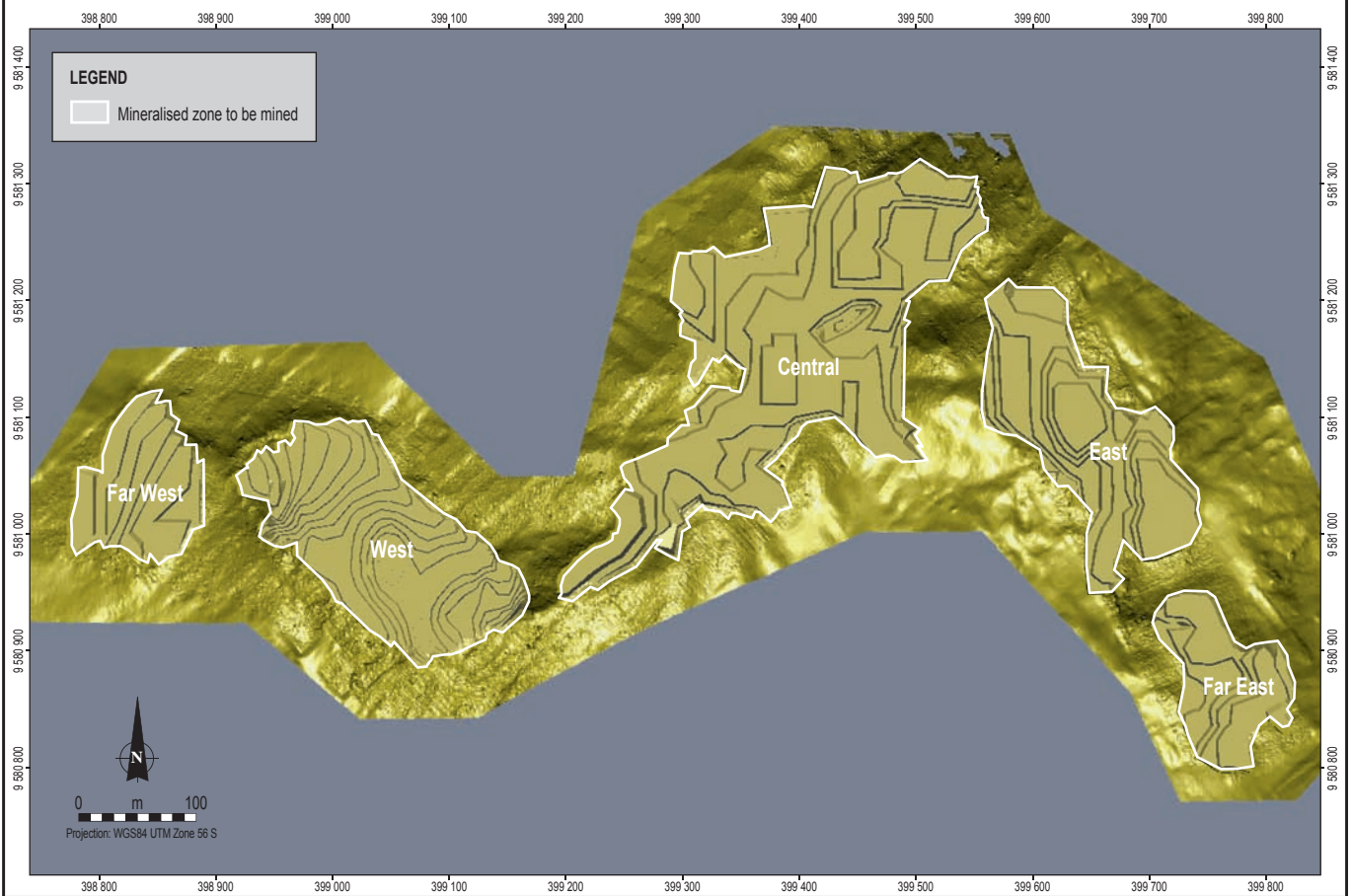
File Name:
7008_09_F05.09_HB

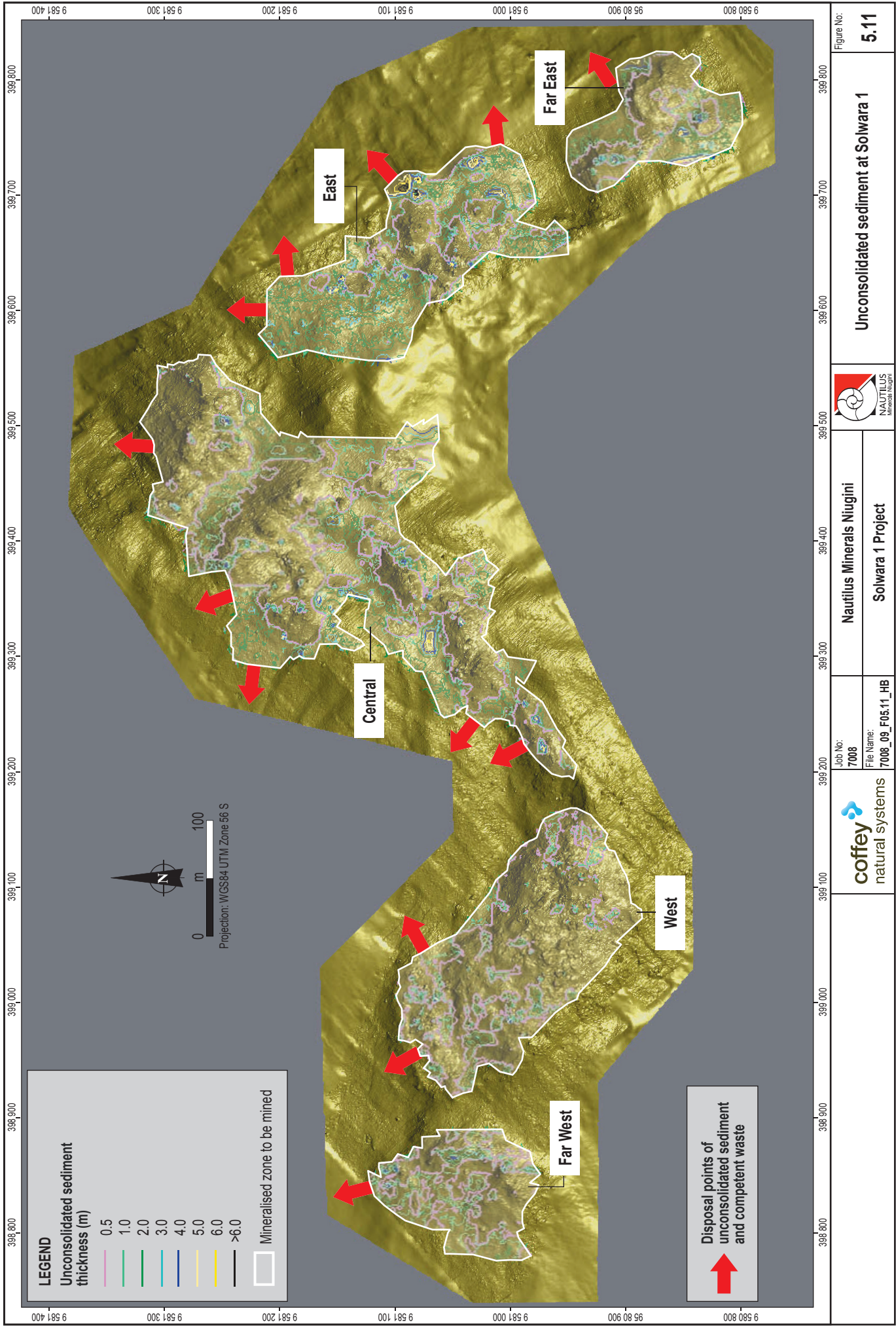


Solwara 1 pre-mining

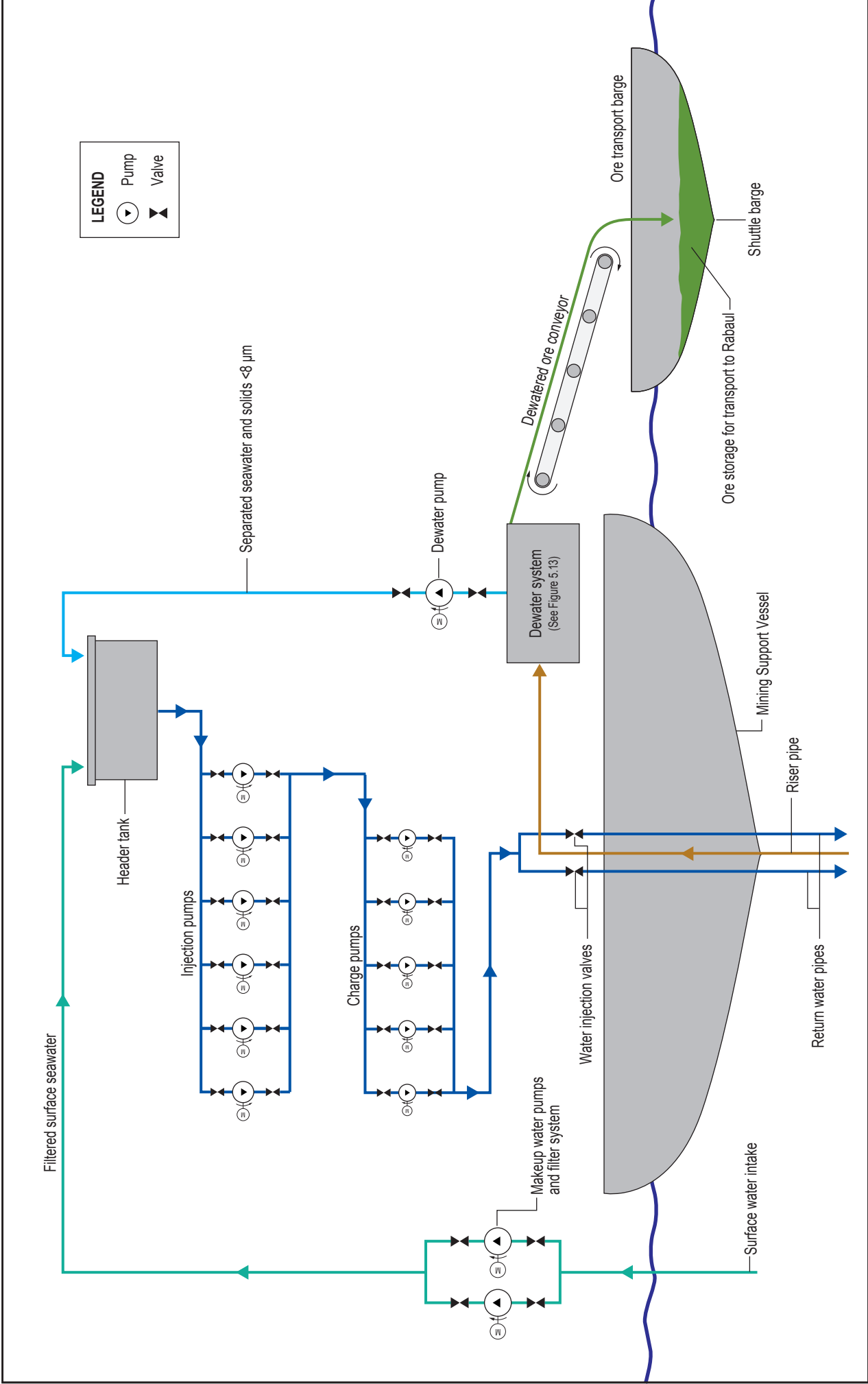


Solwara 1 post-mining





		Unconsolidated sediment at Solwara 1		Figure No: 5.11
Nautilus Minerals Niugini		Solwara 1 Project		
Job No: 7008 File Name: 7008_09_F05.11_HB				



LEGEND
 (Pump symbol) Pump
 (Valve symbol) Valve

	Job No: 7008	Nautilus Minerals Niugini Solwara 1 Project		Figure No: 5.12
	File Name: 7008_09_F05.12_HB			

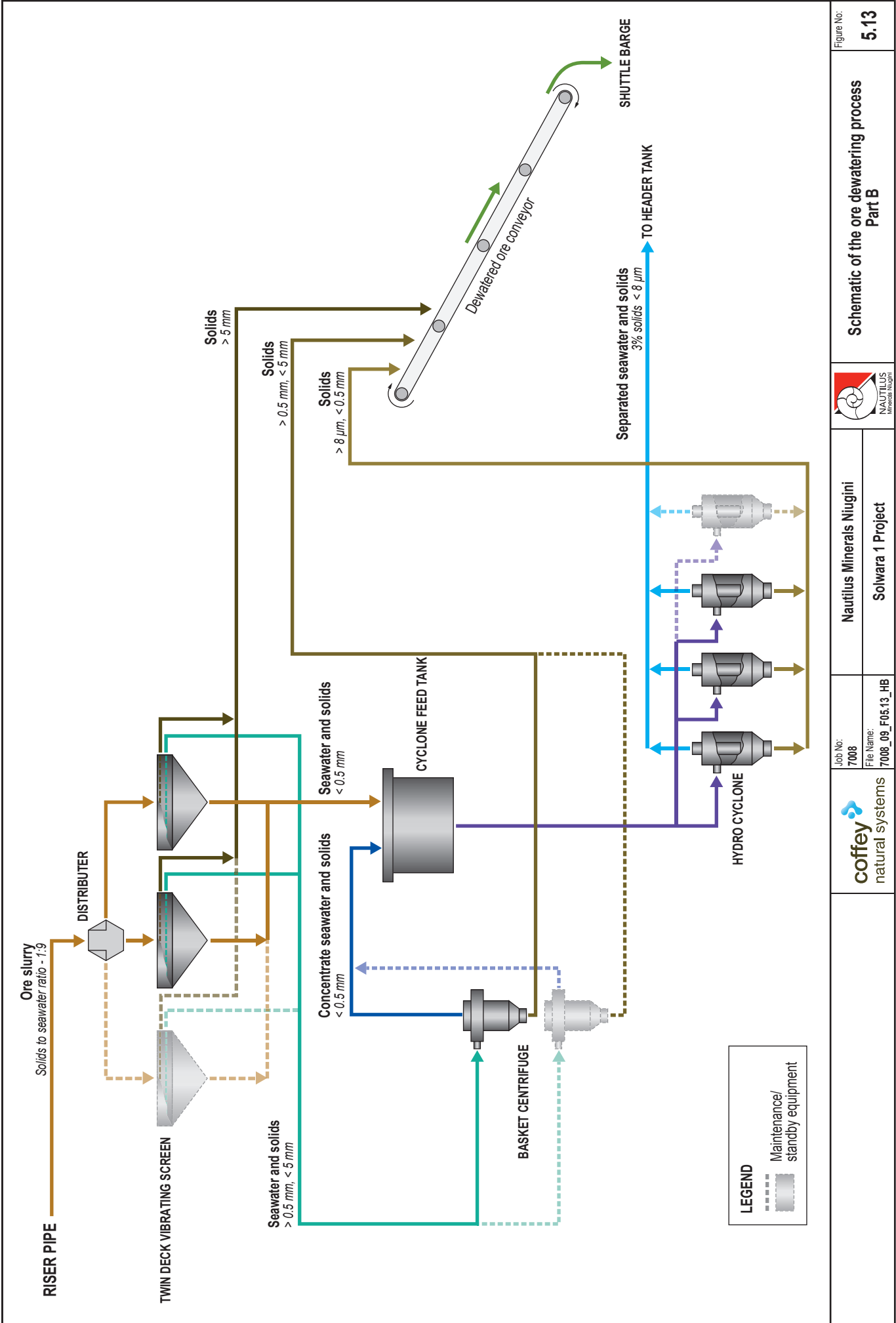




Plate 5.1
Tug boat



Plate 5.2
Shuttle barge



Plate 5.3
Mobile stacker



Plate 5.4
Stockpile storage area



Plate 5.5
Mobile ship loader